



ELECTRIC CUSHION TIRE FORKLIFT

8,000 LB CAPACITY

THE POWER AND EFFICIENCY YOUR BUSINESS NEEDS



COMFORT AND CONFIDENCE.

STEP INTO THE OPERATOR COMPARTMENT OF AN FBC40N ELECTRIC FORKLIFT



Spacious Operator Compartment:

From the beginning of the shift to the end, this forklift was designed for optimal comfort. Customized comfort is provided to the operator by way of a fully adjustable seat with wide range of movement and a high profile position. The low-profile dashboard allows visibility to the load, while the 36.1" of headroom provides a comfortable workspace for operators of varying sizes.

Preset Customizable Performance Modes:

There are four preset performance modes available in order to fine tune the balance between efficiency and performance as dictated by the application and the experience of the operator.

Control In The Palm Of Your Hand:

Standard features like control rollback and the responsive acceleration drive system allow for confident operation in a wide variety of applications.

- Designed for superior comfort
- Adjustable seating to suit your operators
- Optimized visibility

All come together to create a comfortable forklift you can count on.





Features	Standard	Optional
Self Diagnostic Display	●	
Fully-hydrostatic steer axle	●	
AC motor control system	●	
Regenerative braking system	●	
4 adjustable Performance Modes	●	
LED forward working lights	●	
Operator Presence system	●	
Full-suspension seat	●	



Ask your local dealer about the available options for improved performance, productivity and operator comfort.

POWERFUL EFFICIENCY.

LONGER RUNTIMES AND LESS MAINTENANCE ADD UP TO A BETTER BOTTOM LINE.



Rock-Solid Frame: The all welded box frame and battery edge cover design helps to extend the life of your investment.

Run Longer: On One Battery Charge.

Thanks to the design of the FBC40N, your operators can deliver the productivity you need to get the job done.

Key Features:

- **Advanced AC Power System** – The FBC40N is equipped with AC drive motors that provide fast acceleration, travel and lift speeds to meet the needs of your customers.
- **Optimized Regenerative Technology** – The truck reclaims power from different operations (switchback, foot brake, controlled rollback, lifting functions) in order to lessen power consumption and potentially reduce component wear thanks to less heat generation.



Easy To Service

Easily removable side, top, floor and rear access panels make accessing the motors and major components simple, saving you time and money.

- 500-hour extended service intervals
- Self-diagnostics through display panel
- Easy access to key service components

Smart Systems And Options For The Way You Work

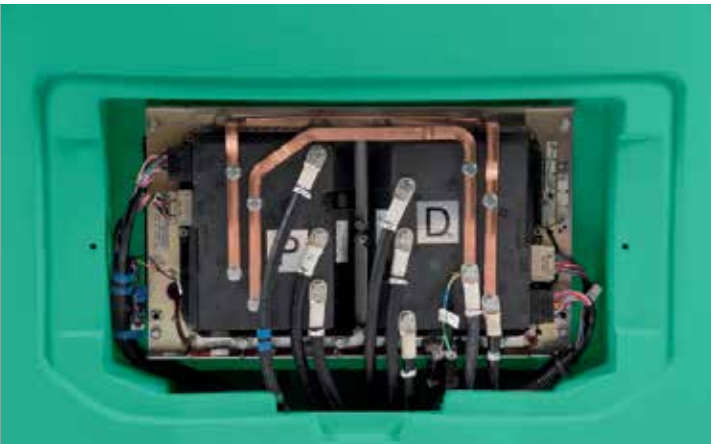
Integrated Presence System (IPS)

The comprehensive presence system interrupts hydraulic and travel activity if the operator is not in the proper operating position. This can help alert the operator to potentially hazardous situations, while increasing operator awareness.

Flexible Options

- **Rear grab handle with horn button** offers operators additional comfort while travelling long distances in reverse or in applications with pedestrians or high traffic.
- **Sideshifter and sideshifting fork positioner** for more precise load handling.
- **Numerous lighting options** to increase operator and pedestrian awareness.

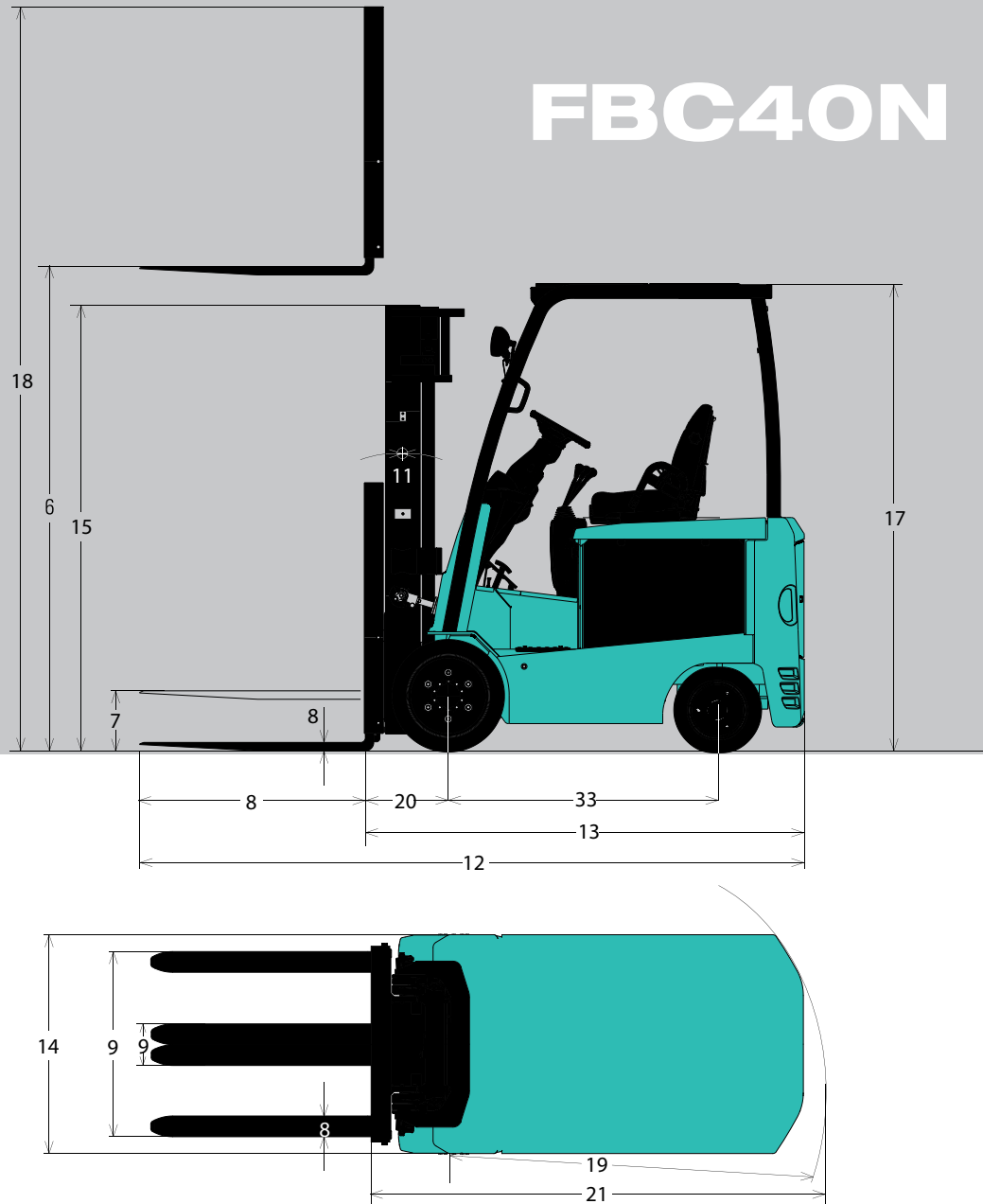
Optional 48V high performance system available for order.



CHARACTERISTICS			FBC40N	
1	Capacity at rated load center	lb kg	8,000	3,500
2	Capacity at load center – distance	in mm	24	500
3	Power – voltage	V	Electric	
4	Tire type – cushion, solid pneumatic		Cushion	
5	Wheels, number front / rear (x = driven)		2x / 2	
DIMENSIONS				
6	Maximum fork height	in mm	138	3,500
7	Free lift	in mm	10.6	270
8	Fork dimensions – thickness x length x width	in mm	2.0 x 42.1 x 5.0	50 x 1,070 x 125
9	Fork spacing – out-to-out minimum / maximum	in mm	11.0 / 38.8	280 / 985
10	Fork carriage to DIN 15 173 a / B / no	in mm	ITA class 3	
11	Tilt forward / backward	deg°	5 / 10	
12	Overall length (with 42" forks)	in mm	142.2	3,610
13	Length to fork face (includes fork thickness)	in mm	100.2	2,545
14	Overall width with single drive tires	in mm	43.3	1,100
15	Height to top of lowered mast	in mm	93.3	2,370
16	SIP to bottom of OHG	in mm	36.1	915
17	Height to top of overhead guard	in mm	87.4	2,220
18	Height with mast raised	in mm	187.2	4,755
19	Minimum outside turning radius	in mm	88.4	2,245
20	Load distance, axle to fork face (load moment constant)	in mm	17.9	455
21	Minimum aisle – 90° stack – zero clearance without load	in mm	106.3	2,700
PERFORMANCE				
22	Travel speed, loaded / empty (36 volt)	mph km/h	7.1 (11.5)	9.0 (14.5)
23	Travel speed, loaded / empty (48 volt)	mph km/h	7.8 (12.5)	9.0 (14.5)
24	Lift speed, loaded / empty (36 volt)	fpm mm/s	43.3 (220)	77.8 (395)
25	Lift speed, loaded / empty (48 volt)	fpm m/s	46.3 (235)	84.7 (430)
26	Lowering speed, loaded / empty	fpm m/s	98.5 (500)	97.5 (495)
27	Gradeability maximum, loaded / empty	%	16.5 / 16.5	
WEIGHT				
28	Empty with minimum weight battery	lb kg	12,380	5,615
29	Axle load with rated load, front / rear	lb kg	18,000 (8,165)	2,380 (1,080)
30	Axle load without load, front / rear	lb kg	4,675 (2,120)	7,705 (3,495)
CHASSIS				
31	Tire size – front (standard duals)	in	22 x 8 x 16	
32	Tire size – rear	in	16.25 x 6 x 11.25	
33	Wheelbase	in mm	63	1,600
34	Track width – front (standard tires)	in mm	35.2	895
35	Track width – rear	in mm	35	890
36	Ground clearance at lowest point of mast	in mm	3.1	80
37	Ground clearance at center of wheelbase	in mm	3.5	90
38	Service brakes	type	Hydraulic / Electric	
39	Parking brakes	type	Pedal	
ELECTRICAL				
40	Battery type		Lead-acid	
41	Battery capacity at 6 hr. discharge rate (36 volt)	Ah kWh	1,400	50.4
42	Battery capacity at 6 hr. discharge rate (48 volt)	Ah kWh	1,200	57.6
43	Battery weight, minimum	lb kg	3,351	1,520
44	Battery weight, maximum	lb kg	3,527	1,600
45	Battery compartment size, maximum	in mm	39.06 x 34.12 x 22.81	990 x 865 x 575
46	Drive motor capacity (60 min. rating) 36v / 48v	HP kW	12 / 16	9 / 12
47	Drive controls / hydraulic controls	type	Hydraulic	
48	Relief pressure for attachments	PSI Mpa	1,845	12.7

NOTE: These specifications assume the use of drive axles, tires and tilt angles specified. Maximum converted value to gradeability at maximum torque of the traction motor. Any modification to specifications, or any other combination of specifications made after the shipment of the truck, requires prior written approval from Mitsubishi Logisnext Americas Inc. (See ANSI/ITSDF B56.1.) Also be advised that overall operating visibility may be affected by the mast configuration and mast options of your truck. Therefore, you may need to add ancillary [auxiliary] devices or modify your operating practices. Consult your dealer for further information.

Call-out numbers shown in the diagram below correspond to the first column of the specifications chart.



SAFETY STANDARDS

These trucks meet American National Standards Institute/Industrial Truck Standards Development Foundation, ANSI/ITSDF B56.1. UL-Classified by Underwriters Laboratories, Inc., as to fire and electric shock hazard only; Type E, EE (optional), Industrial Trucks. Users should be aware of, and adhere to, applicable codes and regulations regarding operator training, use, operation and maintenance of powered industrial trucks, including:

- ANSI/ITSDF B56.1.
- NFPA 505, fire safety standard for powered industrial trucks -type designations, areas of use, maintenance and operation.
- Occupational Safety and Health Administration (OSHA) regulations that may apply.

Specifications, equipment, technical data, photos and illustrations based on information at time of printing and subject to change without notice. Some products may be shown with optional equipment.

Note: Equipping this model (these models) with a power source (e.g. Lithium-ion, Hydrogen Fuel cell, etc.) that has not been previously approved by the factory is considered a modification. Per OSHA 1910.178 and ANSI/ITSDF B56.1, please consult with your factory representative prior to installing any non-OEM power source that has not been previously approved.

FBC40N

8,000 LB CAPACITY ELECTRIC CUSHION TIRE FORKLIFT

Delivering Exceptional Value

More Than 296,000 Parts To Keep You Running

Mitsubishi Forklift Trucks offers several parts programs, all designed to bring you top performance and convenience for your material handling needs. Contact your local dealer to put our services to work for you.

Support To Fit Your Operation

Find out why more companies are relying on Mitsubishi forklift truck dealers to keep their fleet operating at top performance. Our efficiency provides customers with a better return on investment, and qualified service technicians, diverse parts inventory and unparalleled selection of service options can help reduce your total cost of ownership.

Extensive Dealer Network

The Mitsubishi forklift truck dealer network is dedicated to finding the right forklift solution for your business. With more than 300 dealer locations, you can rely on your local dealer to provide the service you need when you need it most.



Manufactured with superior quality and exceptional value, Mitsubishi forklift trucks are supported by an extensive dealer and field support network located throughout North and South America. Don't forget to ask your local Mitsubishi forklift truck dealer about details on factory retail programs, financing plans and additional options and dealer services like planned maintenance and operator training.